

EASY STAND ALONE



Easy Stand Alone 2

Simple & efficient

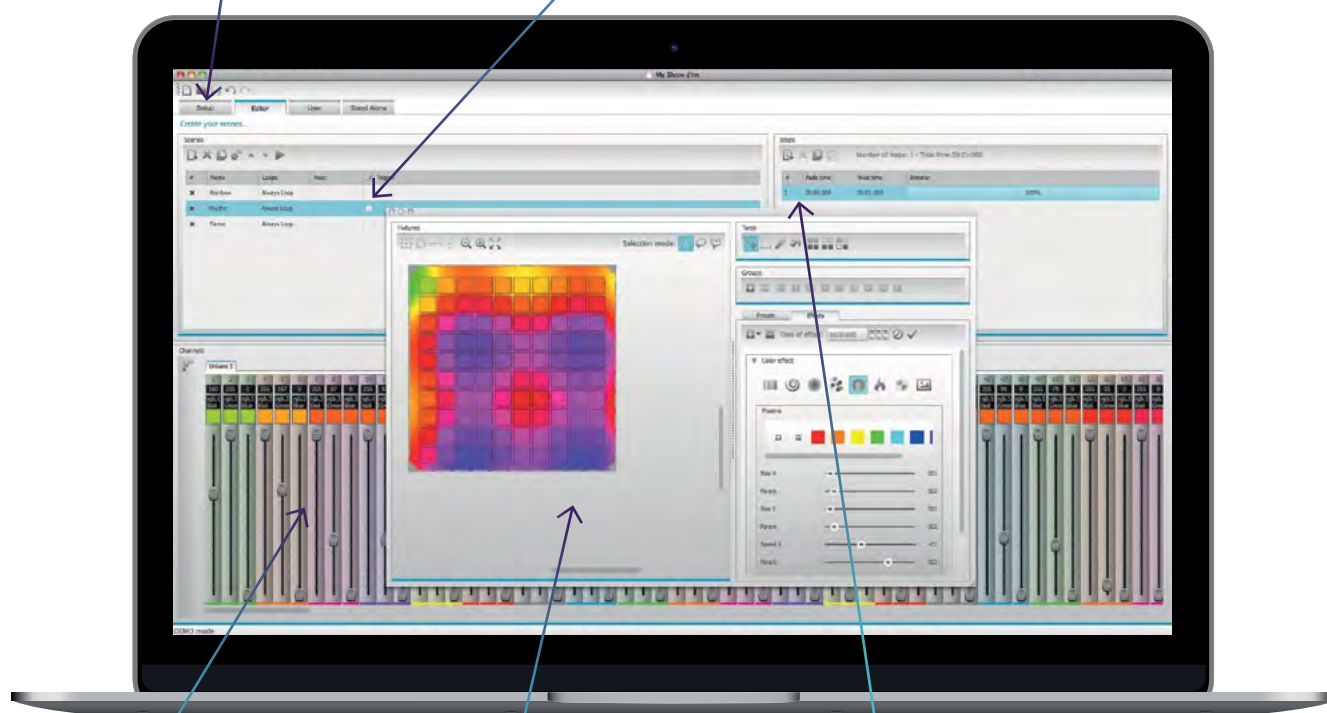
Compatible with both Windows and mac, Easy Stand Alone 2 software has evolved over the years to become a worldwide reference for architectural lighting control. It only requires a few minutes to setup the software and gain full control of any kind of lighting.

○ Tabs

SETUP: insert your lighting fixtures
EDITOR: easily create your scenes
USER: control your lights in live mode
STAND ALONE: write to the interface memory

○ Scenes

Creating scenes can be carried out very easily. For each scene, the software allows you to determine any number of steps, the number of loops, as well as the following scene.



○ Faders

The vertical faders at the bottom of your screen correspond to the DMX level (0 to 255) for each channel. There are several ways to modify these levels.

○ Scene builder

Arrange your lighting fixtures and easily create stunning RGB/RGBW color mixing and moving effects with the new scene builder.

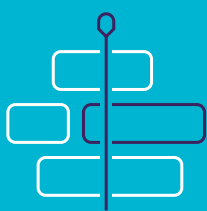
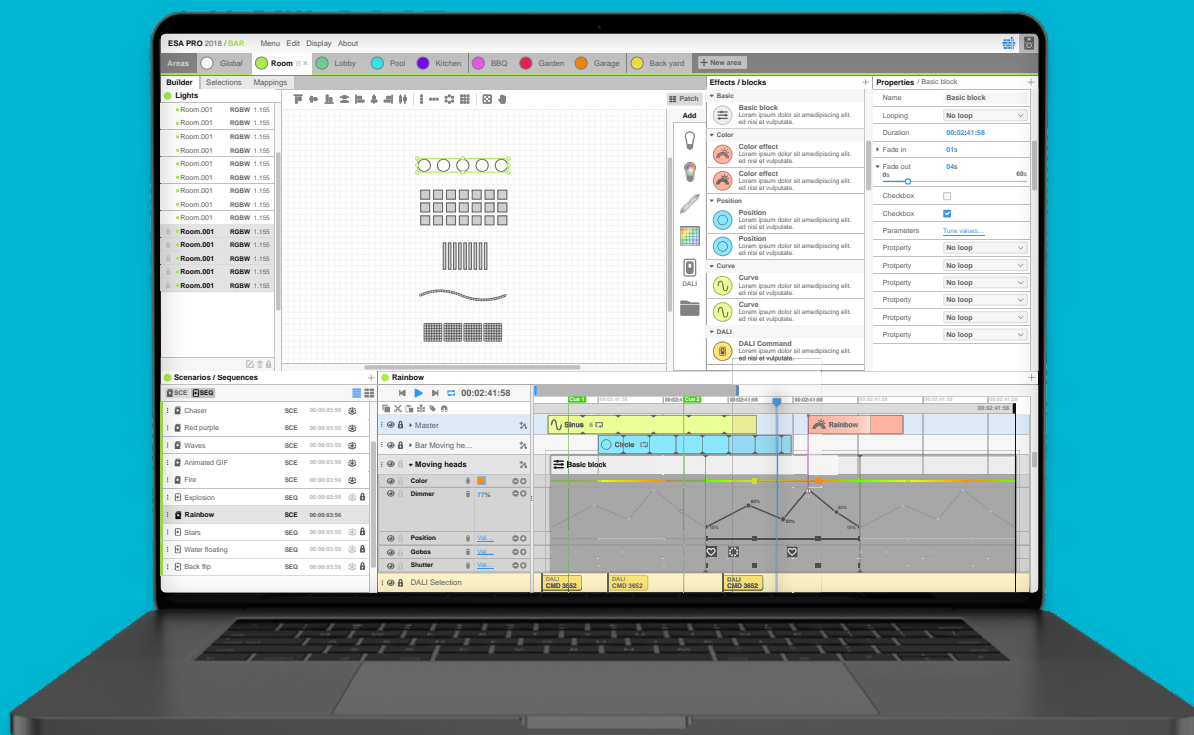
○ Steps

Each Step has a fade time and a waiting time which can be set. By creating several steps in sequence, you will then build a dynamic scene.

Easy Stand Alone Pro 2

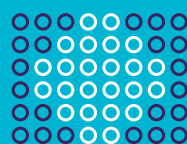
Be creative, be pro

Now compatible with the entire STICK range, our new ESA Pro 2 software combines many innovations along with an ergonomic design. Entirely designed from scratch, ESA Pro 2 is now Mac and PC compatible and offers amazing new features like timeline automation, pixel mapping, multi-zone programming...



Timelines editor

Every scene is built with the timelines. Thanks to this tool, it becomes very easy to build your show. Various effects, static or dynamic are available and can be dragged to the timelines.



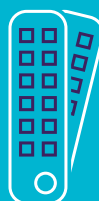
Pixel mapping

Position your LED fixtures according to your installation and map them to pixels using different shapes in order to play multiple effects across them.



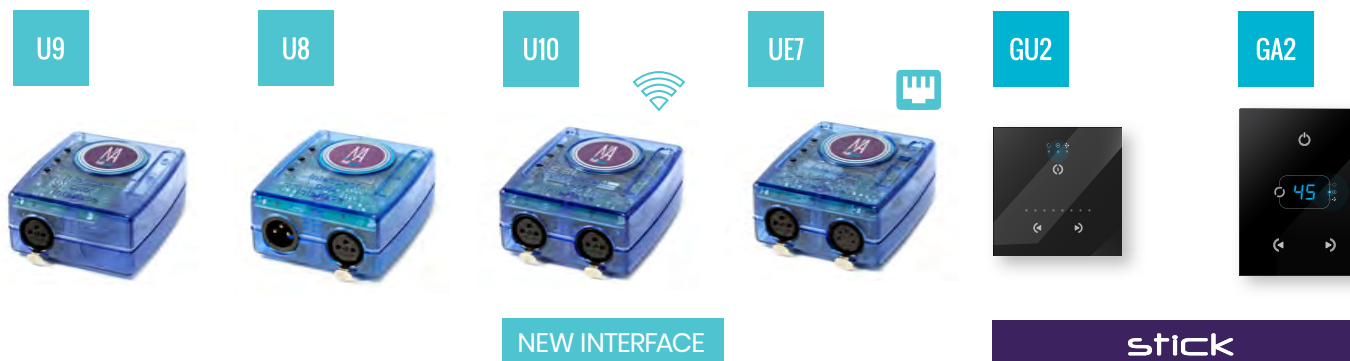
Automations

Color, dimmer, saturation... all effects properties can now be modified with linear curves on top of the timelines. For example, the dimmer of an effect could fade from 0% to 100% following the time.



Full colors management

In addition to RGB colors, ESA Pro 2 allows you to play amazing effects on any color or color mixing system: RGBW, RGBA, white only, tunable white...



General

USB connection	✓	✓	✓	✓	✓	✓
Ethernet connection				✓		
WIFI connection			✓			
ESA software	PC	PC	PC	PC	PC	PC
ESA2 software	PC / Mac	PC / Mac	PC / Mac	PC / Mac	PC / Mac	PC / Mac
ESA Pro software				PC		
ESA Pro 2 software	PC / Mac	PC / Mac	PC / Mac	PC / Mac	PC / Mac	PC / Mac
DMX channels	256	512	512 / 1024* * upgradable	1024	128	512

Standalone mode

Number of scenes	20	255	99	200	24	99
Number of zones	1	1	1	5	1	1
Standalone memory	20K	128K	100K	microSD	12K	76K
Memory capacity (20 ch.)	1200	5600	3935	unlimited	840	3200
Memory capacity (60 ch.)	440	2100	1550	unlimited	310	1200
Memory capacity (512 ch.)		240	190	unlimited		140
Power voltage	5-5.5V DC	5-5.5V DC	5-5.5V DC	5-5.5V DC	5-12V DC	5-12V DC
Power connector	mini USB	mini USB	USB Type-C	mini USB	Screw terminal	Screw terminal

Triggering

Mechanical buttons	3	3	3	3	3	4
Touch-sensitive buttons						
Internal connector	18 pins	HE10	HE10	HE10		
Port triggers	8	8	8	8	1	8
Clock/calendar triggers		100	100	40		
IR remote control			✓	✓		
Remote control apps			✓	✓		